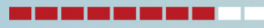


PERFORMANCE

SOLIDANA ECO

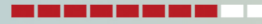
ENERGY SAVINGS



COMFORT

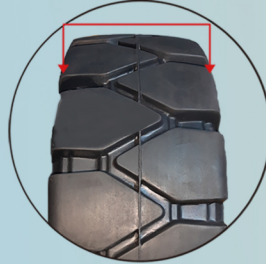


TIRE LIFE



MATERIAL HANDLING TIRES

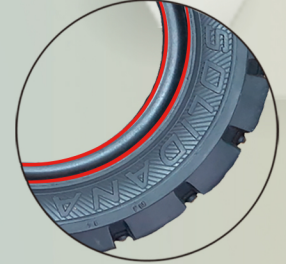
SUITABLE FOR LIFTER OR FORKLIFT
IN TOUGH WORKING CONDITIONS.
SUPER STRONG PNEUMATIC SHAPED
SOLID TIRE WITH SPECIAL COMPOUNDS.



Widen tread makes good stability and ground grasping capability.



Reasonable groove wide ratio reduce rolling resistance, make energy saving!



Designed for easy tire installation with Excellent Rim fit.

ECO proves itself as one of the most cost-effective tires in its class. It is a two-stage tire that has good tensile strength and provides a firm but smooth ride. Our creel bead technology ensures secure and safe fitment to all forklift wheels and rims. ECO is excellent for light and intermittent use in all material handling applications.

Features & Benefits

- Square footprint and increased lug depth.
- Optimized aspect ratio, even wear and increased stability.
- Low rolling resistance, high abrasion resistance tread.
- Good mileage, optimized performance at lower cost.
- Moderate driving comfort due to optimum suspension & absorption.
- Low energy consumption and reduced CO2 emissions.

Tire Size	Rim Size	Clip on	Profile	Tire dimensions		Tire dimensions		Tire load capacity on forklifts at Max. Speed				
				Max width ±1% (mm)	OD ± 2% (mm)	Max width ±1% (inch)	OD ± 2% (Inch)	12 Miles/h (Lbs)		20 Km/h (Kg)		
								Load wheel	Steer wheel	Load wheel	Steer wheel	
4.00-8	3.00 D-8	•	GS	104	406	4.09	15.98	2095	1610	950	730	
5.00-8	3.00 D-8	•	GS	116	446	4.57	17.56	3120	2405	1415	1090	
15x4 1/2-8	125/75-8	3.00 D-8	•	GS	103	377	4.06	14.84	2295	1765	1040	800
16x6-8	150/75-8	4.33 R-8	•	GS	139	407	5.47	16.02	3210	2535	1455	1150
18x7-8	180/70-8	4.33 R-8	•	GS	153	451	6.02	17.76	4730	3640	2145	1650
6.00-9	4.00 E-9	•	GS	139	520	5.51	20.47	4155	3195	1885	1450	
21x8-9	200/75-9	6.00 E-9	•	GS	174	516	6.85	20.31	6075	4675	2755	2120
6.50-10	5.00 F-10	•	GS	153	565	6.02	22.24	5160	3970	2340	1800	
200/50-10	6.50 F-10	•	GS	188	456	7.40	17.95	5445	4190	2470	1900	
23x9-10	225/75-10	6.50 F-10	•	GS	188	582	7.52	22.80	7595	5840	3445	2650
7.00-12	5.00 S-12	•	GS	164	647	6.46	25.47	6435	4940	2920	2240	
23x10-12	8.00 G-12	•	GS	234	580	9.21	22.83	8310	6390	3770	2900	
27x10-12	250/75-12	8.00 G-12	•	GS	232	675	9.13	26.50	8600	6615	3900	3000
7.00-15	5.50-15	•	GS	175	705	7.01	27.76	7815	6005	3545	2725	
7.00-15	6.00-15	•	GS	175	705	7.01	27.76	7815	6005	3545	2725	
250-15	250/70-15	7.00-15	•	GS	211	712	8.43	28.03	10470	8045	4750	3650
250-15	250/70-15	7.50-15	•	GS	211	712	8.43	28.03	10470	8045	4750	3650
8.15-15 (28x9-15)	225/75-15	7.00-15	•	GS	202	681	8.23	26.81	8310	6390	3770	2900
8.25-15	5.50-15	•	GS	194	809	7.64	31.85	10470	8045	4750	3650	
8.25-15	6.50-15	•	GS	193	809	7.60	31.85	10470	8045	4750	3650	
300-15	315/70-15	8.00-15	•	GS	243	812	9.57	31.97	12895	9920	5850	4500
355/65-15	9.75-15	•	GS	291	826	11.46	32.52	17190	13230	7800	6000	
9.00-20	6.50-10		GS	225	971	8.86	38.23	11770	9810	5340	4450	
9.00-20	7.00-20		GS	225	971	8.86	38.23	11770	9810	5340	4450	
10.00-20	7.00-20		GS	250	1006	9.84	39.61	13230	11025	6000	5000	
10.00-20	7.50-20		GS	250	1006	9.84	39.61	13230	11025	6000	5000	
10.00-20	8.00-20		GS	250	1006	9.84	39.61	13230	11025	6000	5000	
11.00-20	7.50-20		GS	265	1088	10.43	42.83	14420	12015	6540	5450	
11.00-20	8.00-20		GS	265	1088	10.43	42.83	14420	12015	6540	5450	
11.00-20	8.50-20		GS	265	1088	10.43	42.83	14420	12015	6540	5450	
12.00-20	8.00-20		GS	265	1088	10.43	42.83	16535	13780	7500	6250	
12.00-20	8.50-20		GS	265	1088	10.43	42.83	16535	13780	7500	6250	